

SIMONSWERK

Butt Hinge B 4030

Quality Butt Hinge for demanding applications

SIMONSWERK

B 4030 S

Quality Butt Hinge for demanding applications

Hinge	unrebated	up to 120 kg
-------	-----------	--------------

Technical Data

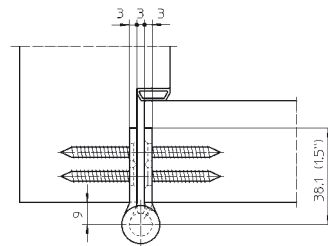
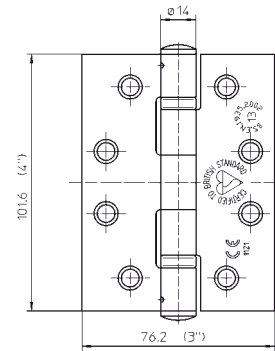
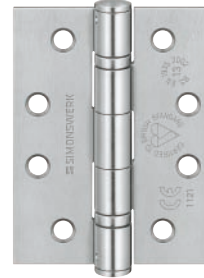
Load capacity	120.0 kg
Size	101.6 mm (4")
Width	76.2 mm (3")
Thickness of material	3 mm

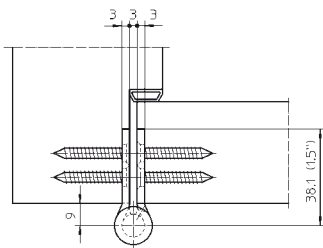
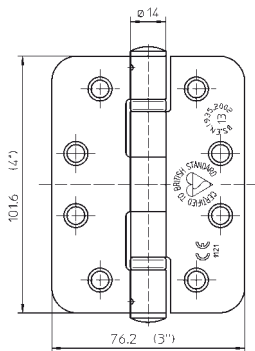
Descriptive text

SIMONSWERK Butt Hinge B 4030 S for demanding applications with severely used doors. Made of stainless steel, fire rated and CE-marked to grade 13. 4" (101.6 mm) high x 3" (76.2 mm) wide. Stainless steel wood screws included.

Finish

satin stainless steel

Quality Marks



B 4030 R

Quality Butt Hinge for demanding applications

Hinge	unrebated	up to 120 kg
-------	-----------	--------------

Technical Data

Load capacity	120.0 kg
Size	101.6 mm (4")
Width	76.2 mm (3")
Thickness of material	3 mm

Descriptive text

SIMONSWERK Butt Hinge B 4030 R for demanding applications with severely used doors. Made of stainless steel, fire rated and CE-marked to grade 13. 4" (101,6 mm) high x 3" (76,2 mm) wide. Stainless steel wood screws included.

Finish

satin stainless steel

Quality Marks



FURTHER BRANDS MADE BY SIMONSWERK

 **SIMONSWERK**
TECTUS®

 **SIMONSWERK**
VARIANT® VX

 **SIMONSWERK**
VARIANT® VN

 **SIMONSWERK**
VARIANT® VG

 **SIMONSWERK**
VARIANT® V

 **SIMONSWERK**
BAKA®

 **SIMONSWERK**
SIKU®

 **SIMONSWERK**
ALPRO®

Butt Hinge B 4030

Flyer Butt Hinge B 4030

09/2008

5 800289 0 00001/1.0



SIMONSWERK GmbH

Bosfelder Weg 5

D-33378 Rheda-Wiedenbrück

www.simonswerk.com

www.bandsysteme.com