

 **SIMONSWERK**

INDEX

ULTIMATE 2D	up to 80 kg	4
MILLENNIUM 2D	up to 80 kg	5
COLUMBUS 3D	up to 80 kg	6
BUTT HINGE B 4030 S	up to 120 kg	7
BUTT HINGE B 4030 R	up to 120 kg	8
SAMSON	up to 100 kg	9
UNIVERSAL MILLING FRAME		10
NOTES		11



Hinges for Flush Doors rediscover quality, technology and design.

SIMONSWERK – Quality Made in Germany

SIMONSWERK is one of Europe's leading manufacturers and has been developing high-quality hinge systems for doors and windows for around 120 years. The focus of their extensive product range lies in the very latest design and the ultimate in product perfection.

The company's approx. 500 employees are committed to innovative product development and the production and sale of their hinges under the motto "The right hinge for every application". With a wide product range and many special customer solutions, SIMONSWERK covers almost every area where hinges are required. The company manufactures hinges for applications in wood, aluminium, steel, PVCu and glass. The usage areas include residential, heavy-duty, exterior doors, windows and metalworking.

With a subsidiary in Poland and a subsidiary in the United Kingdom, SIMONSWERK now serves around 60 foreign markets in Europe, America, Asia and Australia. All over the world, fabricators, dealers and architects increasingly opt for the high-quality hinge systems from SIMONSWERK.

»Quality solutions: Hinge systems for flush doors.

Innovation, a wide product range, quality and a high service level are synonymous with the SIMONSWERK brand. Longevity, precise functionality and multifaceted solutions ensure that SIMONSWERK hinges achieve both design and technical requirements combined with safety and aesthetic appearance.

These criteria are ideally fulfilled for flush door applications when using the impressive range of ULTIMATE 2D, MILLENNIUM 2D and COLUMBUS 3D and SAMSON hinges. These hinges are designed for quick adjustment, easy mounting and have a security pin option for effective burglar resistance. They are also CE marked.

The extensive SIMONSWERK product range also comprises the heavy duty Butt Hinge system B 4030. Available with square or radius corners the B 4030 features a load capacity of 120 kg, CE mark and fire test evidence.

Simple to use installation tools help to achieve correct and effective mounting for this outstanding hinge program fulfilling all the requirements concerning stability and security of timber entrance and patio doors.

SIMONSWERK HINGES FOR FLUSH DOORS

ULTIMATE 2D

for flush doors

Hinge	unrebated	up to 80 kg
-------	-----------	-------------

Technical Data

Load capacity	80.0 kg (176 lbs)
Knuckle length	101.6 mm (4")
Width	101.6 mm (4")
Knuckle diameter	13.0 mm
Material thickness	2.5 mm
Cutter diameter	24.0 mm
Depth of receiver	15.0 mm

Descriptive text

SIMONSWERK ULTIMATE 2D door hinge for unrebated doors with timber, steel or aluminium frames. CE-certified, load capacity 80 kg, maintenance-free, quick and easy mounting, reduced inventory due to non-handed application, time saving adjustments as removing of door is not required. Also available with security pin (MSTS). Vertical and horizontal adjustment: Height +/- 2.5 mm, Side +/- 2.5 mm. Finish ...

Installation Tools

Jig	Universal milling frame
Template for universal milling frame	No. 5 250375 5

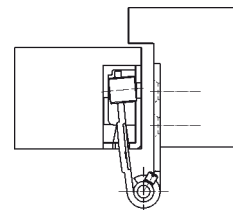
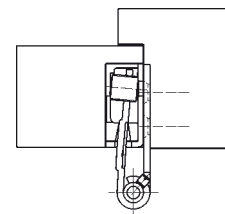
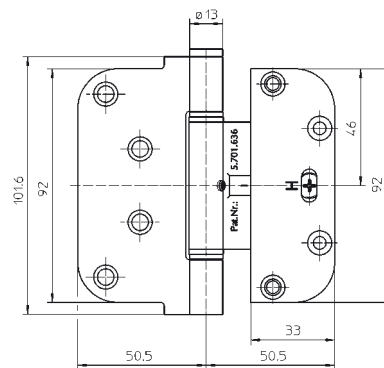
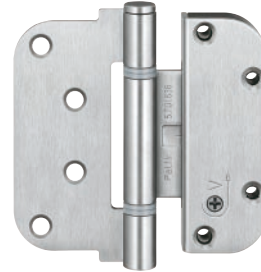
Finish

polished chromed, stainless steel satin brushed, white aluminium, traffic white, solid brass (polished, antique, oil rubbed, satin nickel, antique nickel) and further finishes on request

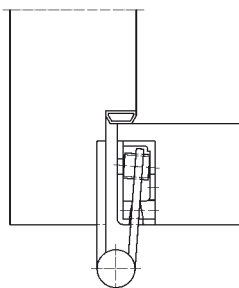
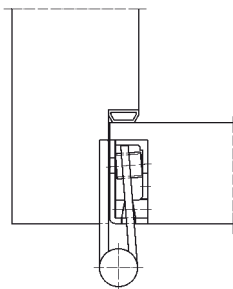
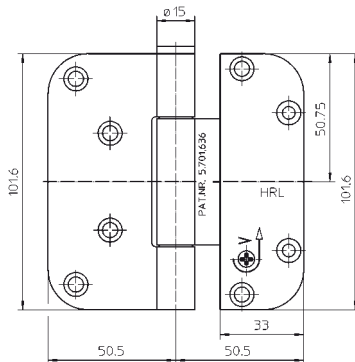
Quality Marks



WF = maintenance-free slide bearing technology



SIMONSWERK HINGES FOR FLUSH DOORS



MILLENNIUM 2D

for flush doors

Hinge	unrebated	up to 80 kg
--------------	------------------	--------------------

Technical Data

Load capacity	80.0 kg (176 lbs)
Knuckle length	101.6 mm (4")
Width	101.6 mm (4")
Knuckle diameter	15.0 mm
Material thickness	3.5 mm
Cutter diameter	24.0 mm
Depth of receiver	15.0 mm

Descriptive text

SIMONSWERK MILLENNIUM 2D door hinge for unrebated doors with timber, steel or aluminium frames. CE-certified, load capacity 80 kg, maintenance-free concealed bearings, quick and easy mounting, reduced inventory due to non-handed application, time saving adjustments as removing of door is not required. Also available with security pin (MSTS). Vertical and horizontal adjustment: Height +/- 3 mm, Side +/- 2 mm. Finish...

Finish

polished chromed, stainless steel satin brushed, white aluminium, traffic white and further finishes on request

Quality Marks



WF = maintenance-free slide bearing technology

SIMONSWERK HINGES FOR FLUSH DOORS

COLUMBUS 3D

for flush doors

Hinge	unrebated	up to 80 kg
-------	-----------	-------------

Technical Data

Load capacity	80.0 kg (176 lbs)
Knuckle length	101.6 mm (4")
Width	92.5 mm
Knuckle diameter	13.0 mm
Material thickness	2.5 mm
Cutter diameter	24.0 mm
Depth of receiver	14.0 mm

Descriptive text

SIMONSWERK COLUMBUS 3D door hinge for unrebated doors with timber, steel or aluminium frames. CE-certified, load capacity 80 kg, maintenance-free, quick and easy mounting, reduced inventory due to non-handed application, time saving adjustments as removing of door is not required. Also available with security pin (MSTS). Three-dimensionally adjustable: Height +/- 3 mm, Side +/- 2 mm, Depth +/- 2 mm. Finish...

Installation Tools

Jig	Universal milling frame
Template for universal milling frame	No. 5 250375 5

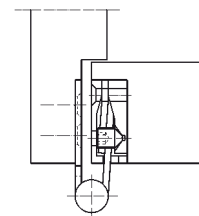
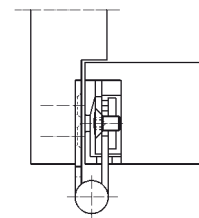
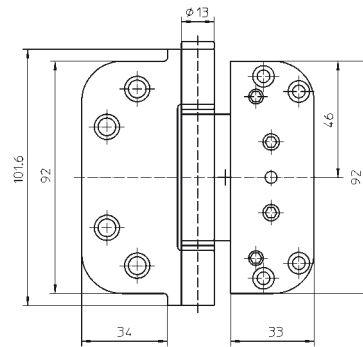
Finish

polished chromed, stainless steel satin brushed, white aluminium, traffic white and further finishes on request

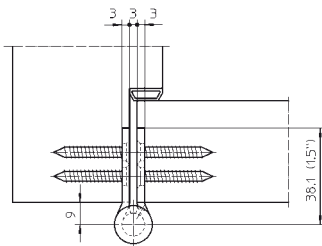
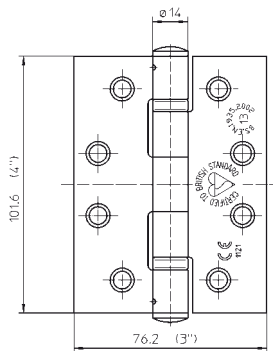
Quality Marks



WF = maintenance-free slide bearing technology



SIMONSWERK HINGES FOR FLUSH DOORS



B 4030 S

Quality Butt Hinge for demanding applications

Hinge	unrebated	up to 120 kg
-------	-----------	--------------

Technical Data

Load capacity	120.0 kg (264 lbs)
Knuckle length	101.6 mm (4'')
Width	76.2 mm (3'')
Knuckle diameter	14 mm
Material thickness	3 mm

Descriptive text

SIMONSWERK Butt Hinge B 4030 S for demanding applications where doors are in continuous use. Made of stainless steel, fire rated and CE-marked to grade 13. 4" (101.6 mm) high x 3" (76.2 mm) wide. Stainless steel wood screws included.

Finish

satin stainless steel

Quality Marks



SIMONSWERK HINGES FOR FLUSH DOORS

B 4030 R

Quality Butt Hinge for demanding applications

Hinge	unrebated	up to 120 kg
-------	-----------	--------------

Technical Data

Load capacity	120.0 kg (264 lbs)
Knuckle length	101.6 mm (4")
Width	76.2 mm (3")
Knuckle diameter	14 mm
Material thickness	3 mm
Radius	10

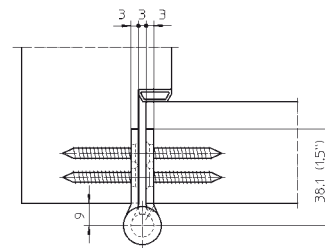
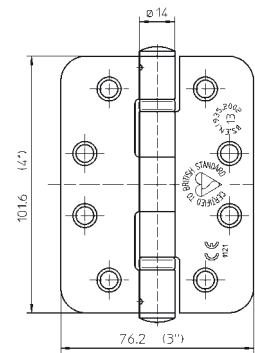
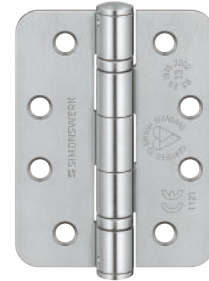
Descriptive text

SIMONSWERK Butt Hinge B 4030 R for demanding applications where doors are in continuous use. Made of stainless steel, fire rated and CE-marked to grade 13. 4" (101.6 mm) high x 3" (76.2 mm) wide. Stainless steel wood screws included.

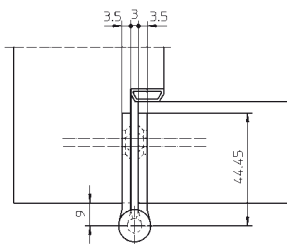
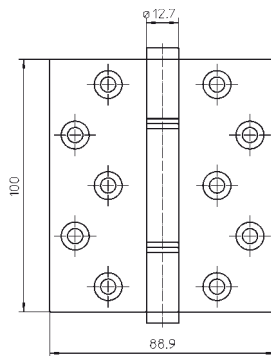
Finish

satin stainless steel

Quality Marks



SIMONSWERK HINGES FOR FLUSH DOORS



SAMSON

for flush doors

Hinge	unrebated	up to 100 kg
-------	-----------	--------------

Technical Data	1850 (CE)	1860 (CE)	1880 (CE)
Load capacity	100.0 kg (220 lbs)	100.0 kg (220 lbs)	100.0 kg (220 lbs)
Knuckle length	100.0 mm	100.0 mm	100.0 mm
Width	76.2 mm (3")	101.6 mm (4")	88.9 mm (3.5")
Knuckle diameter	12.7 (0.5")	12.7 (0.5")	12.7 (0.5")
Material thickness	3.5 mm	3.5 mm	3.5 mm

Descriptive text

SIMONSWERK SAMSON heavy-duty door hinges made of solid brass for unrebated doors with timber, steel or aluminium frames. Tested to BS EN 1935 grade 12. 25 year guarantee, load capacity 100 kg (with 3 hinges), maintenance-free. CE marked versions are suitable for fire and escape door sets. Security dog bolt, square or radius corner and designer finial options. Available in different sizes: 4"x3.5" (1880 (CE)), 4"x4" (1860 (CE)), 4"x3" (1850 (CE)). Finish...

Finish

self colour, polished and lacquered, satin brass and lacquered, satin chromium plate, polished chromium plate, satin nickel plate, polished nickel plate, imitation bronze metal antique and further finishes on request

Note

The CE version is supplied complete with intumescent pads.

Application

Fire and escape door sets (CE version)

Quality Marks



SIMONSWERK UNIVERSAL MILLING FRAME

Universal milling frame

The universal milling frame is a universal fixing tool for numerous fittings. Slots can be routed accurately for a particular hinge with the corresponding routing template.

To be used with

Routing template ULTIMATE 2D	No. 5 250375 5
Routing template COLUMBUS 3D	No. 5 250375 5

The complete milling frame consists of

- 1 milling frame
- 1 clamping device

Process steps

1. Choose template according to the hinge.
2. Cutter and collar ring must be according to the template.
3. Adjust the rail on both sides of the milling frame.
4. Adjust the angle on both sides of the milling frame.
5. Position the milling frame onto the work piece by means of centre pin, adjust clamping mechanism and tighten the clamping spindle.
6. Insert routing template.
7. Adjust depth-stop and conduct routing process.
8. Clean the routed slot.
9. Insert the hinge into the slot and fix by means of appropriate screws.

Note

Please order corresponding template separately.



CONTENTS

SIMONSWERK

ULTIMATE 2D
MILLENIUM 2D
COLUMBUS 3D
BUTT HINGE B 4030 S
BUTT HINGE B 4030 R
SAMSON

FURTHER BRANDS MADE BY SIMONSWERK

SIMONSWERK TECTUS®

SIMONSWERK VARIANT® VX

SIMONSWERK VARIANT® VN

SIMONSWERK VARIANT® VG

SIMONSWERK VARIANT® V

SIMONSWERK BAKA®

SIMONSWERK ALPRO®

SIMONSWERK SIKU® 3D

Brochure Hinges for Flush Doors

04/2010
5 800317 0 00001/2.0



OUR PRODUCT INFORMATION SYSTEM

www.bandsysteme.com

SIMONSWERK GmbH

Bosfelder Weg 5
33378 Rheda-Wiedenbrück
Germany

Fon +49 (0)5242 / 413-0
Fax +49 (0)5242 / 413-260

sales@simonswerk.de
www.simonswerk.com
www.bandsysteme.com

SIMONSWERK UK Ltd.

Burcot Works, Spring Street
Tipton, West Midlands DY4 8TF
United Kingdom

Phone 0121 522 2848
Fax 0121 557 7042

sales@simonswerk.co.uk
www.simonswerk.co.uk