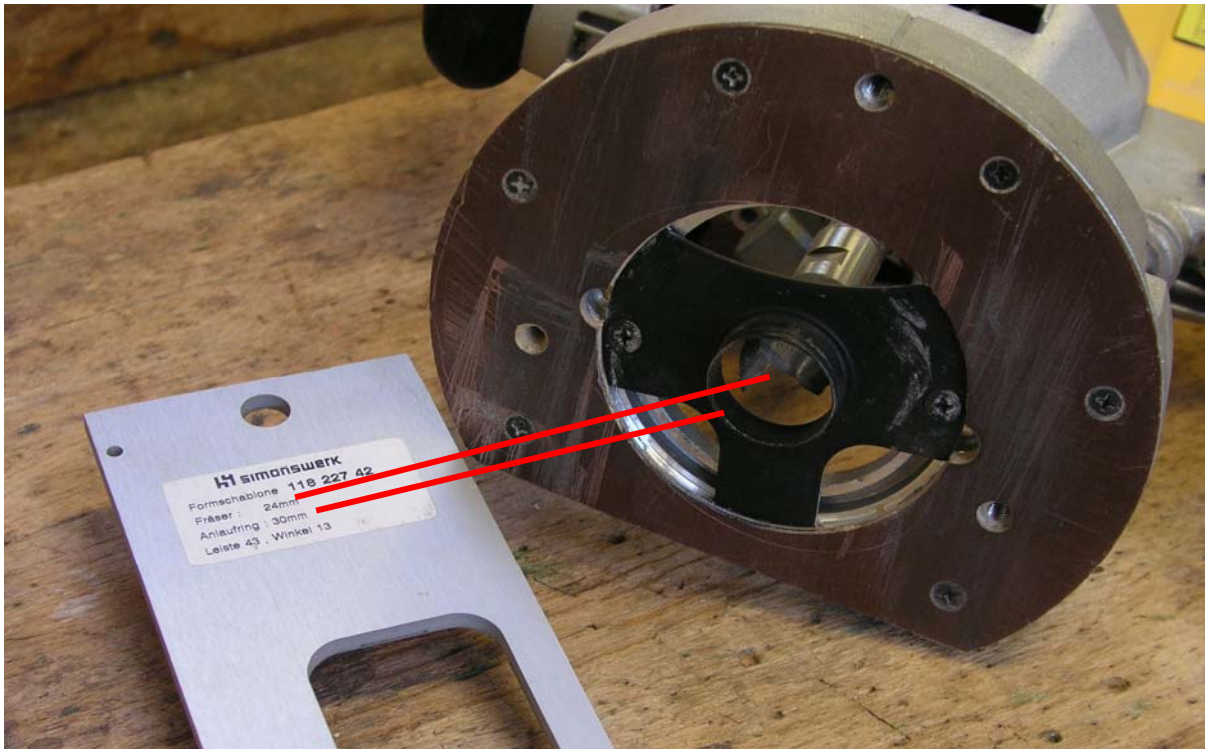


H4 SIMONSWERK

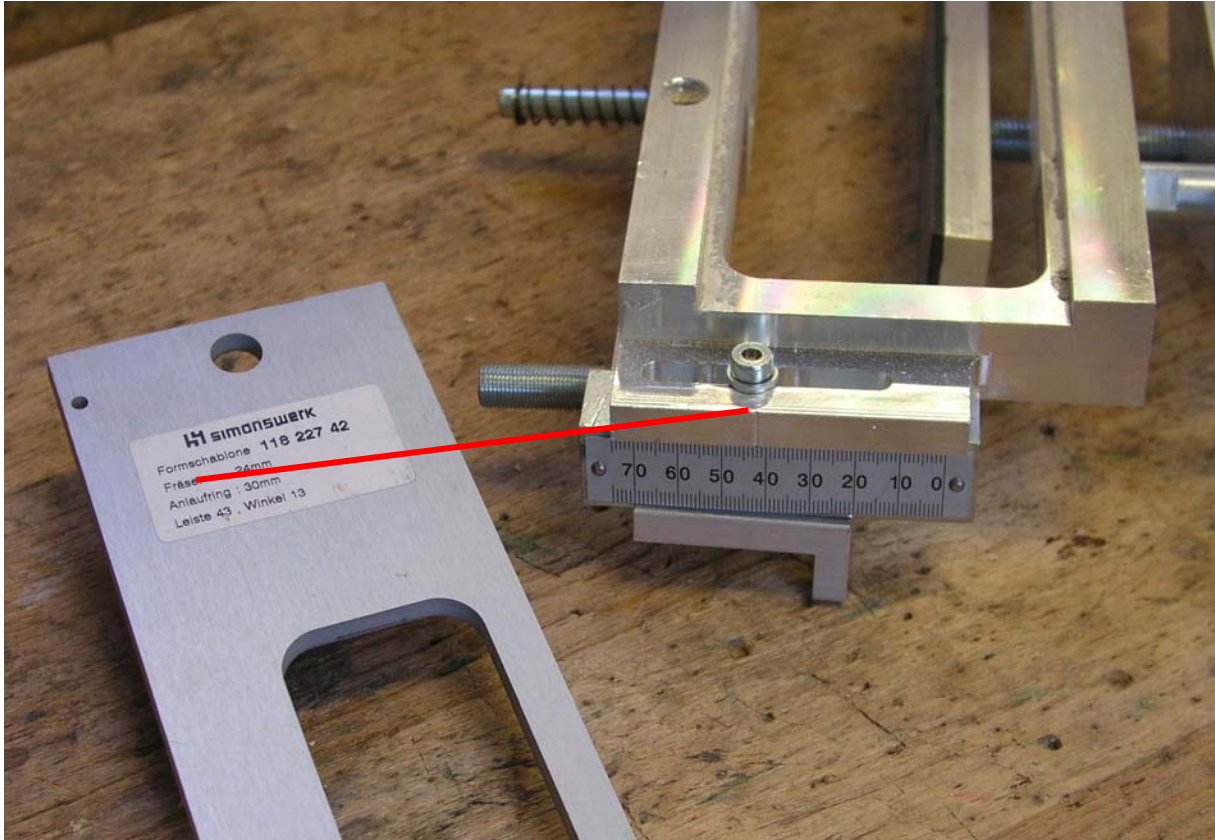




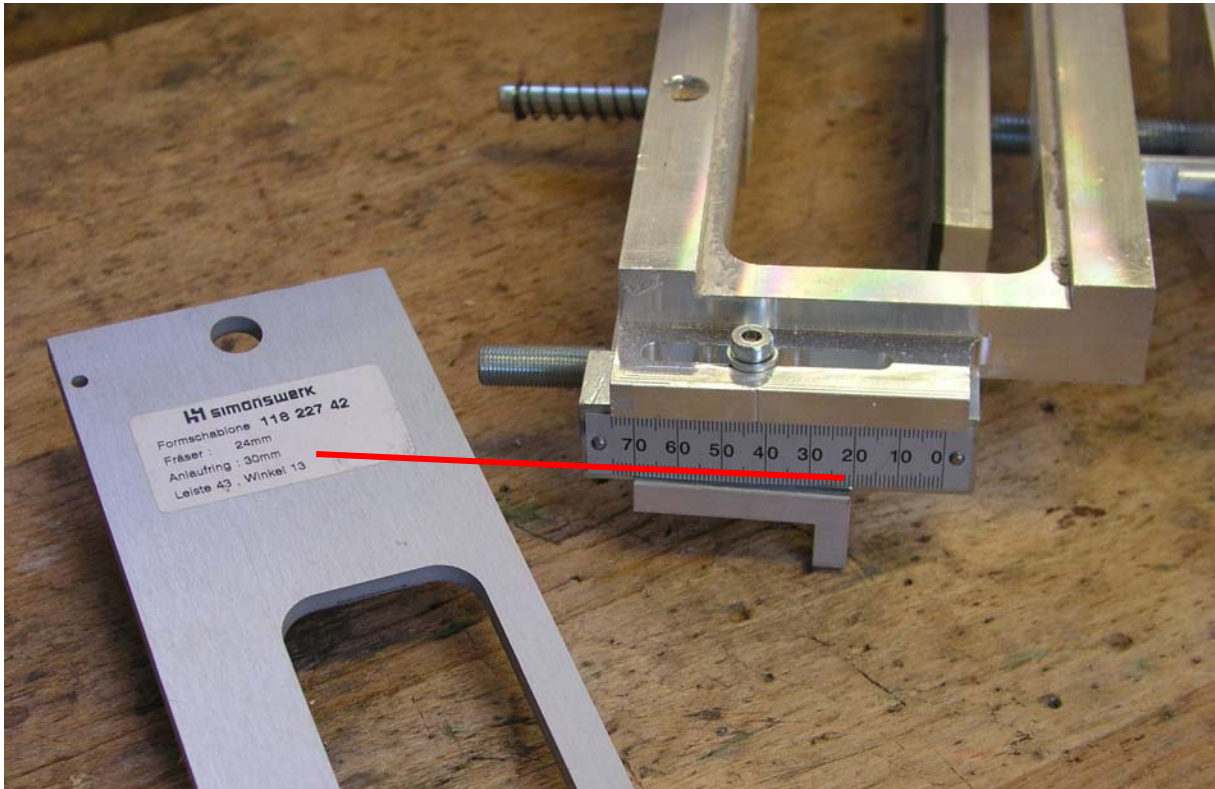
1



2



3



4



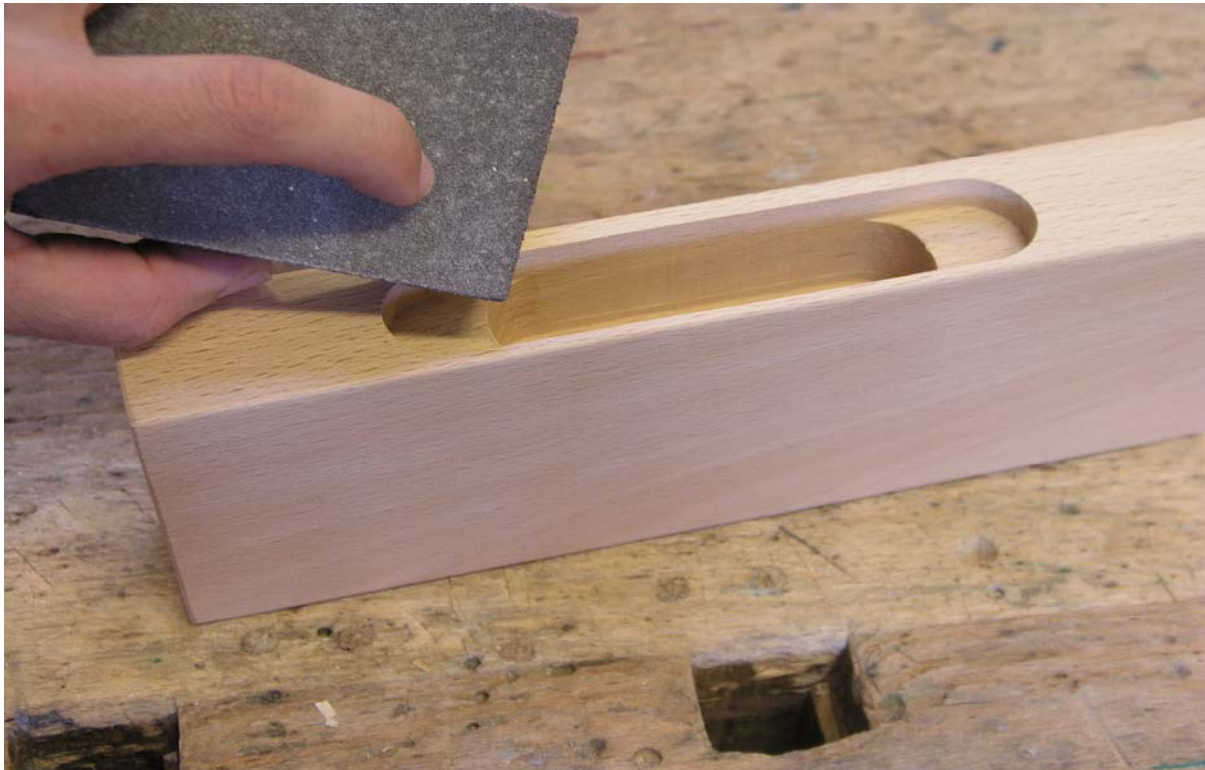
5



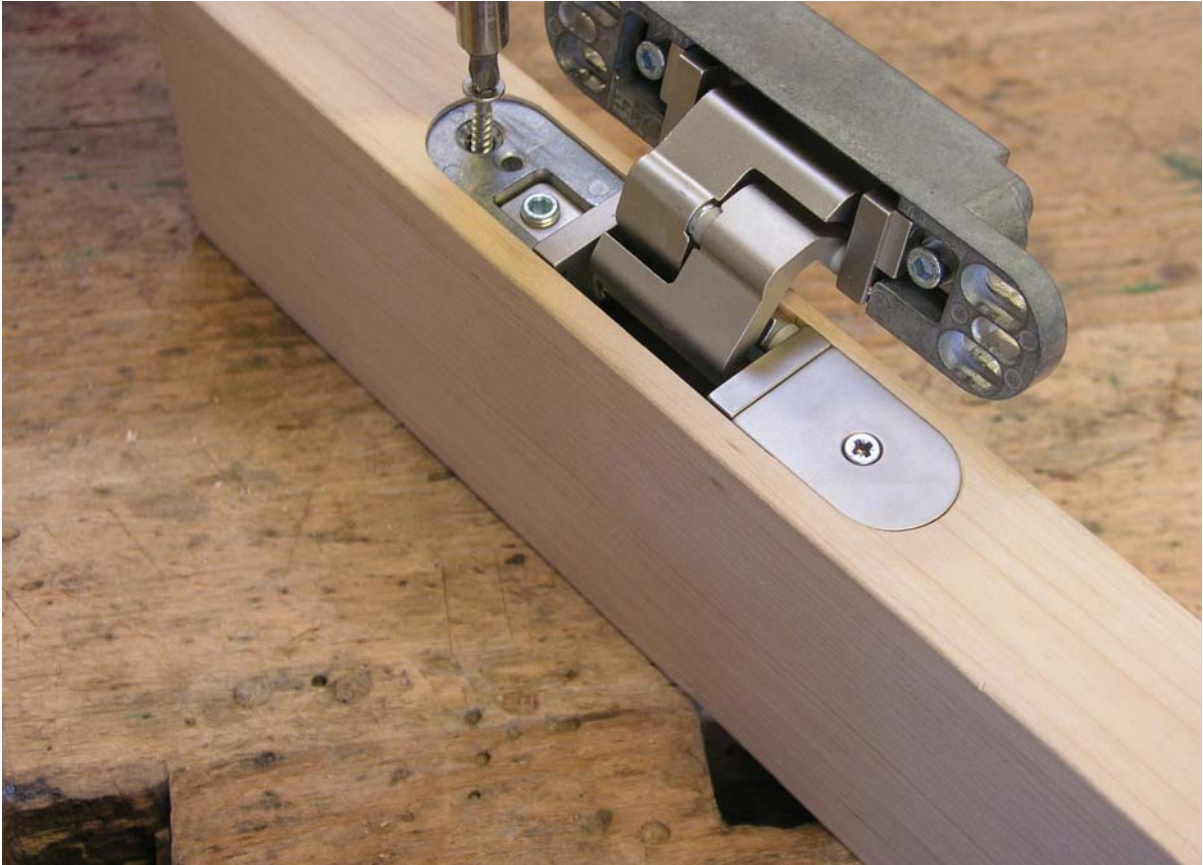
6

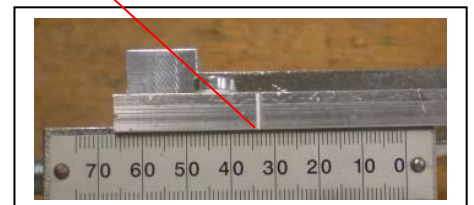
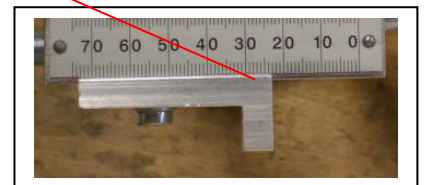


7



8





English

- 1 Choose template according to the hinge.
- 2 Cutter and collar ring must be according to the template.
- 3 Adjust the rail on both sides of the milling frame.
- 4 Adjust the angle on both sides of the milling frame.
- 5 Position the milling frame onto the work piece by means of centre pin, adjust clamping mechanism and tighten the clamping spindle.
- 6 Insert routing template.
- 7 Adjust depth-stop and conduct routing process.
- 8 Clean the routed slot.
- 9 Insert the hinge into the slot and fix by means of appropriate screws.