

# ROBE HOOKS

Solid brass robe hooks



# ROBE HOOKS

The solid brass robe hook collection are ideal for a wide range of uses. The range consisting of both robe hooks and wardrobe hooks will suite any décor from traditional to modern.

The new stylish designs offer a solution for all types of interior designs and are available in a wide range of finishes including PVD which has achieved 1,000 hrs corrosion resistance tests to BSEN 1670 and can stand up to the most aggressive conditions, has a high temperature resilience, good impact strength and excellent abrasion resistance.

---

**PRODUCT FEATURES**

- › Solid brass robe hooks for use on various wall and door types
  - › Simple modern design that will complement any interior design
  - › Various finishes including standard and PVD
  - › Supplied as one coat hook complete with fixing
  - › PVD finish – salt spray tested to over 1,000 hours
- 



## STANDARD FINISHES



Aged Brass  
(UK 501)



Antique Brass  
(UK 502)



Antique Nickel  
(UK 503)



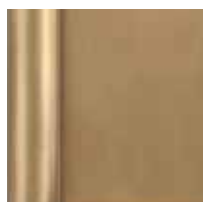
Black Nickel  
(UK 504)



Copper Bronze  
(UK 505)



Copper  
(SW 506)



Honeycombe  
(UK 507)



Imitation Bronze  
(UK 508)



Midnight  
(UK 509)



Pearl Nickel  
(UK 510)



Polished Chrome  
(UK 511)



Polished & Lacquered  
(UK 512)



Polished Nickel  
(UK 513)



Satin Brass & Lacquered  
(UK 514)



Satin Chrome  
(UK 515)



Satin Nickel  
(UK 516)

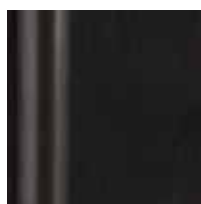
## PVD FINISHES



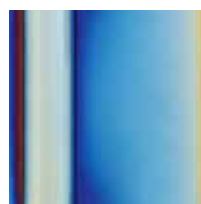
PVD Brass  
(UK 517)



PVD Copper Rose  
(UK 518)



PVD Matt Black  
(UK 519)



PVD Rainbow  
(UK 520)



PVD Stainless Steel  
Effect (UK 521)

### Care of Finishes

1. Regular cleaning with a cloth dampened with good light oil or lanolin should be enough to keep all finishes in its original condition for a long period.
2. For extra cleaning of polished and lacquered finishes it is recommended that a good quality wax polish is used, particularly on externally fitted items, applied every few weeks.
3. Some lacquered finishes can break down eventually due to adverse conditions. Therefore the life of all finishes is beyond our control and cannot be guaranteed.
4. For more information regarding salt spray corrosion testing on certain finishes to BS EN 1670 please contact your distributor or the manufacturer.
5. Do not use Solvents, cleaning chemicals or abrasive products on surface finishes.
6. Do not apply adhesive tapes to any surface finishes.

# ROBE HOOK

## Robe Hook Ref. 6700

for use on various wall and door types

### Robe Hook

#### Product Features

- Solid brass robe hooks for use on wall and door types
- Simple modern design that will complement any interior design
- Concealed fixings
- Various finishes including standard and PVD

#### Technical Data

Overall length	26.0 mm
Diameter of body	16.0 mm
Diameter of rose	24.0 mm

#### Finishes

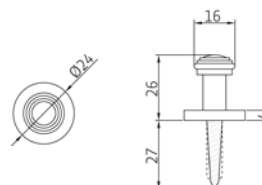
Aged Brass (UK 501), Antique Brass (UK 502), Antique Nickel (UK 503), Black Nickel (UK 504), Copper Bronze (UK 505), Copper (UK 506), Honeycombe (UK 507), Imitation Bronze (UK 508), Midnight (UK 509), Pearl Nickel (UK 510), Polished Chrome (UK 511), Polished & Lacquered (UK 512), Polished Nickel (UK 513), Satin Brass & Lacquered (UK 514), Satin Chrome (UK 515), Satin Nickel (UK 516)

PVD Finishes: PVD Brass (UK 517), PVD Copper Rose (UK 518), PVD Matt Black (UK 519), PVD Rainbow (UK 520), PVD Stainless Steel Effect (UK 521)

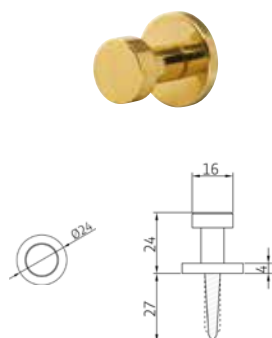
Salt spray tested to over 1,000 hours.

#### Note

Supplied as one robe hook complete with fixing.



# ROBE HOOK



## Robe Hook Ref. 6710

for use on various wall and door types

### Robe Hook

#### Product Features

- Solid brass robe hooks for use on wall and door types
- Simple modern design that will complement any interior design
- Concealed fixings
- Various finishes including standard and PVD

#### Technical Data

Overall length	24.0 mm
Diameter of body	16.0 mm
Diameter of rose	24.0 mm

#### Finishes

Aged Brass (UK 501), Antique Brass (UK 502), Antique Nickel (UK 503), Black Nickel (UK 504), Copper Bronze (UK 505), Copper (UK 506), Honeycombe (UK 507), Imitation Bronze (UK 508), Midnight (UK 509), Pearl Nickel (UK 510), Polished Chrome (UK 511), Polished & Lacquered (UK 512), Polished Nickel (UK 513), Satin Brass & Lacquered (UK 514), Satin Chrome (UK 515), Satin Nickel (UK 516)

PVD Finishes: PVD Brass (UK 517), PVD Copper Rose (UK 518), PVD Matt Black (UK 519), PVD Rainbow (UK 520), PVD Stainless Steel Effect (UK 521)

Salt spray tested to over 1,000 hours.

#### Note

Supplied as one robe hook complete with fixing.

# WARDROBE HOOK

## Wardrobe Hook Ref. 6720

for use on various wall and door types

### Wardrobe Hook

#### Product Features

- Solid brass wardrobe hooks for use on wall and door types
- Simple modern design that will complement any interior design
- Various finishes including standard and PVD

#### Technical Data

Overall length	50.0 mm
Overall width	18.0 mm
Material thickness	4.0 mm

#### Finishes

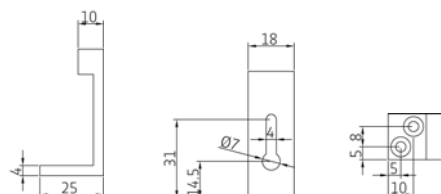
Aged Brass (UK 501), Antique Brass (UK 502), Antique Nickel (UK 503), Black Nickel (UK 504), Copper Bronze (UK 505), Copper (UK 506), Honeycombe (UK 507), Imitation Bronze (UK 508), Midnight (UK 509), Pearl Nickel (UK 510), Polished Chrome (UK 511), Polished & Lacquered (UK 512), Polished Nickel (UK 513), Satin Brass & Lacquered (UK 514), Satin Chrome (UK 515), Satin Nickel (UK 516)

PVD Finishes: PVD Brass (UK 517), PVD Copper Rose (UK 518), PVD Matt Black (UK 519), PVD Rainbow (UK 520), PVD Stainless Steel Effect (UK 521)

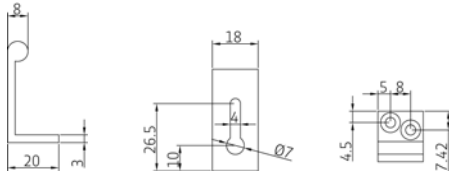
Salt spray tested to over 1,000 hours.

#### Note

Supplied as one wardrobe hook complete with fixing.



# WARDROBE HOOK



## Wardrobe Hook Ref. 6730

for use on various wall and door types

### Wardrobe Hook

#### Product Features

- Solid brass wardrobe hooks for use on wall and door types
- Simple modern design that will complement any interior design
- Various finishes including standard and PVD

#### Technical Data

Overall length	40.0 mm
Overall width	18.0 mm
Material thickness	3.0 mm

#### Finishes

Aged Brass (UK 501), Antique Brass (UK 502), Antique Nickel (UK 503), Black Nickel (UK 504), Copper Bronze (UK 505), Copper (UK 506), Honeycombe (UK 507), Imitation Bronze (UK 508), Midnight (UK 509), Pearl Nickel (UK 510), Polished Chrome (UK 511), Polished & Lacquered (UK 512), Polished Nickel (UK 513), Satin Brass & Lacquered (UK 514), Satin Chrome (UK 515), Satin Nickel (UK 516)

PVD Finishes: PVD Brass (UK 517), PVD Copper Rose (UK 518), PVD Matt Black (UK 519), PVD Rainbow (UK 520), PVD Stainless Steel Effect (UK 521)

Salt spray tested to over 1,000 hours.


#### Note

Supplied as one wardrobe hook complete with fixing.

PLEASE VISIT OUR PRODUCTSELECTOR AT  
[www.simonswerk.co.uk](http://www.simonswerk.co.uk)

**SIMONSWERK UK Ltd**

Burcot Works, Spring Street  
Tipton, West Midland DY4 8TF  
United Kingdom

 +44 (0)121 522 2848

[sales@simonswerk.co.uk](mailto:sales@simonswerk.co.uk)  
[www.simonswerk.co.uk](http://www.simonswerk.co.uk)